

Comparison of Illinois River Crossing Locations

This document presents information comparing the impacts associated with the corridor band locations that cross the Illinois River. These are referred to as the northern and southern crossings. This information is intended to help determine if one of these crossing locations could be dropped at this point in the study process.

The matrix presented here shows the engineering and environmental impact data categories used for the overall study analysis. As presented here, the data are limited to the length of the representative bands in the northern and southern crossings—between IL Route 26, on the east side of the River, and IL Route 6, on the west side. For the northern crossing, the

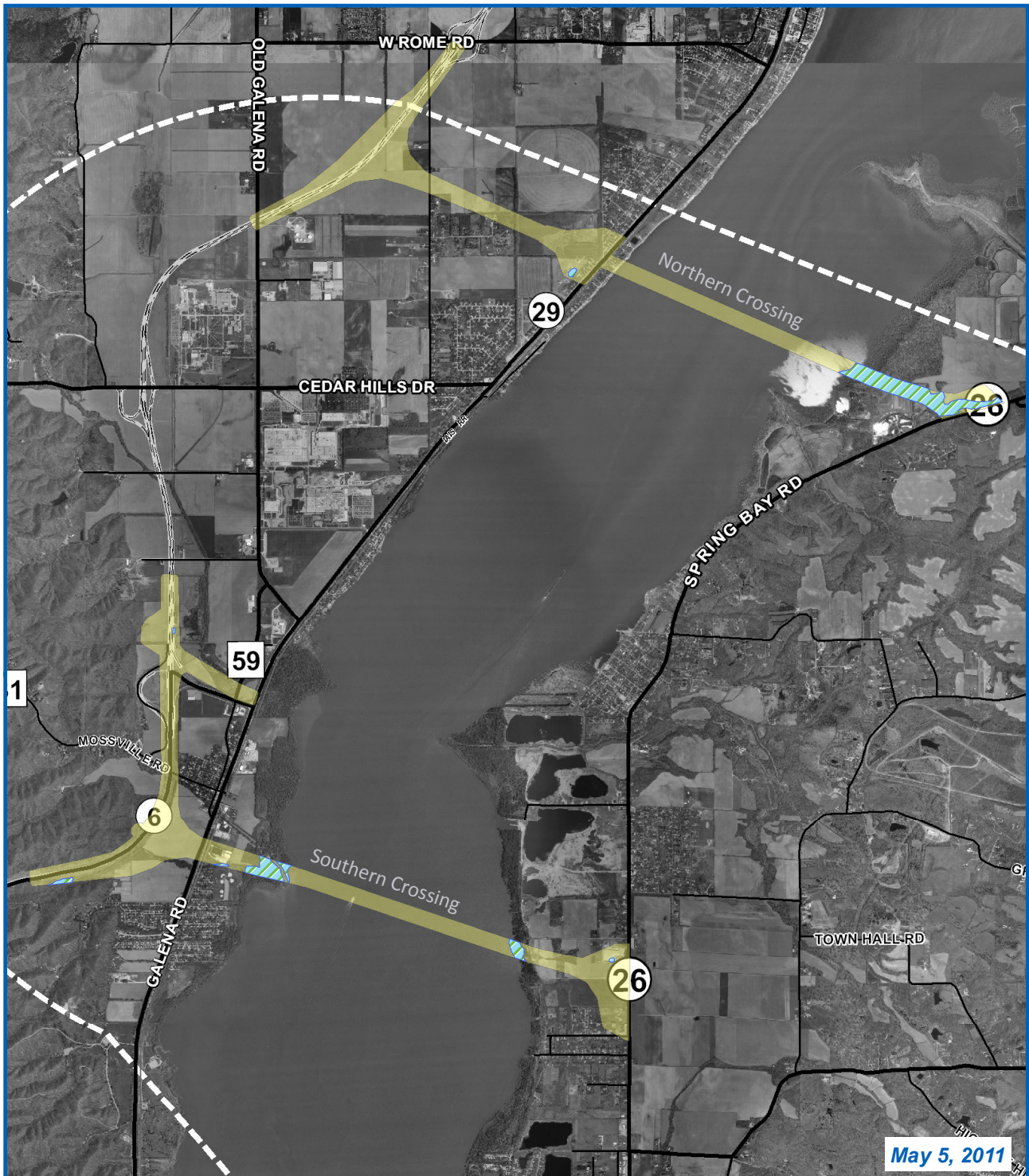
connection to IL 6 would be at the location of the northern extension of Route 6. The maps on the following pages show, in close up, the locations of these bands’ impacts on wetlands, floodplains and conservation lands. Shown below are the projected Average Annual Daily Traffic (AADT) volumes predicted for the river crossings.

ENGINEERING MEASURES	UNIT	Northern Crossing	Southern Crossing
Corridor Length	miles	4	4
Interchanges	number req'd	3	3
Steep Terrain	miles	0.3	0.3
	feet	1589	1630
Illinois River Bridge Length	miles	2	1.8
Illinois River Bridge Cost	\$ million	\$178	\$164

ENVIRONMENTAL MEASURES	UNIT	Northern Crossing	Southern Crossing
Total New Right-of-Way (500 ft wide)	acres	449	341
Forest	acres	69	91
Cropland	acres	245	164
Other Agricultural Land	acres	2	0
Cropland Diagonal Severences	miles	1.4	1.3
	feet	7369	6982
Conservation/Park Land	acres	0.3	2.8
Community Cohesion / Division	occurrences	0	0
Residential Relocations	number req'd	31	5
Commercial/Industrial Relocations	number req'd	1	2
Institutional Relocations	number req'd	0	1
Historic Sites	occurrences	0	0
Stream Crossings	number req'd	1	1
Wetlands	acres	48	21
100-Year Floodplains	acres	57	57
Residential Proximity Impacts to 1/4 mi.	number req'd	175	287
Commercial/Industrial Proximity Impacts to 1/4 mi.	number req'd	8	15
Institutional Proximity Impacts to 1/4 mi.	number req'd	0	5
Historic Sites Proximity Impacts to 1/4 mi.	number req'd	0	0

**Traffic Volumes at Illinois River Crossings
(Annual Average Daily Traffic Volumes)**

	P1	P2	P3	P4	T5	T6	T7	M8	M9	M10	D11	D12	D13	D14
North Crossing	dropped (CAG #8)				dropped (CAG #8)			18,000	18,500		17,700	18,400		dropped (CAG #8)
South Crossing		25,100	25,800	32,800		26,000	32,000			26,100			26,200	



RIVER CROSSING COMPARISONS MAP - WETLANDS
EASTERN BYPASS STUDY
 PEORIA, TAZEWELL & WOODFORD COUNTIES
 P-94-021-07

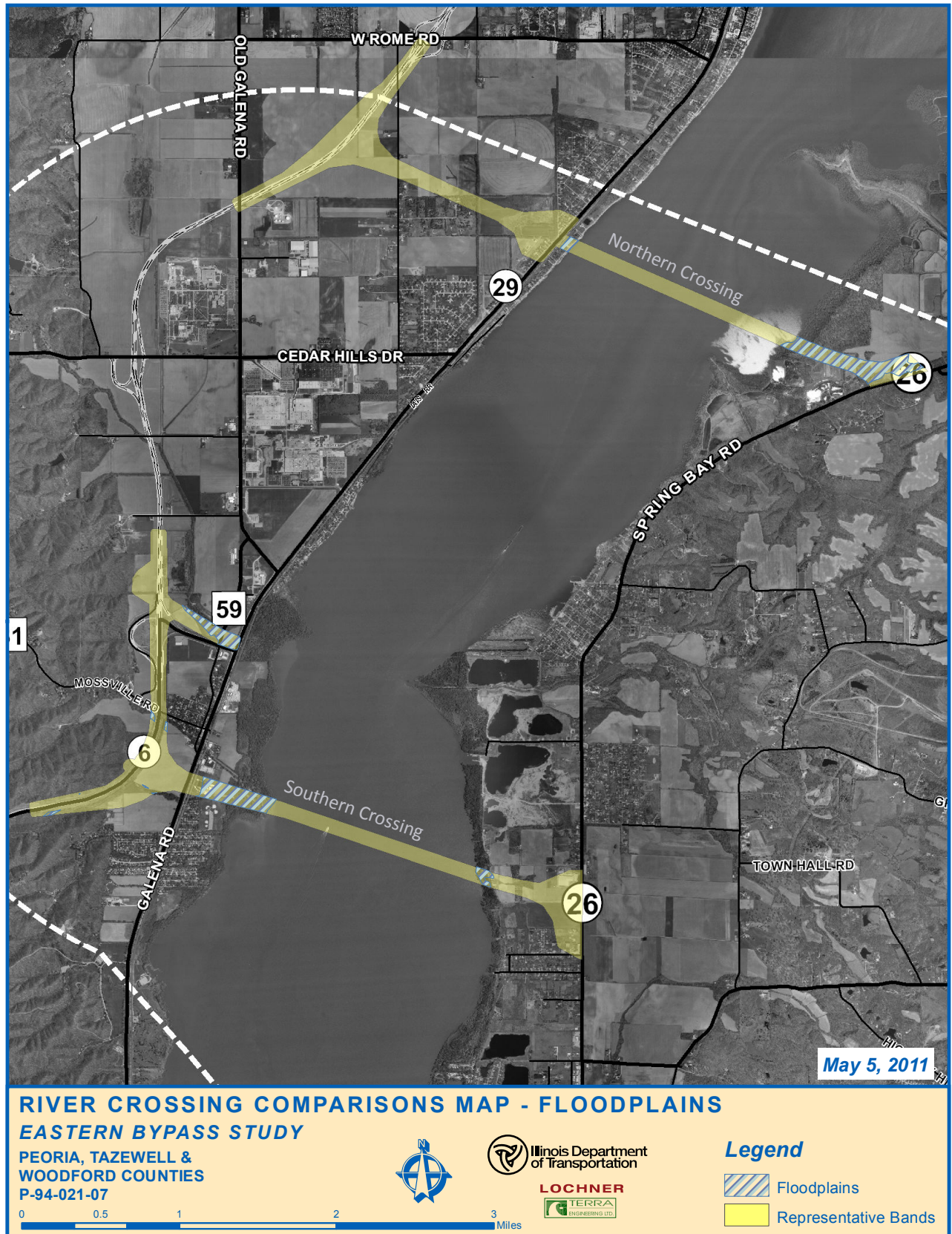


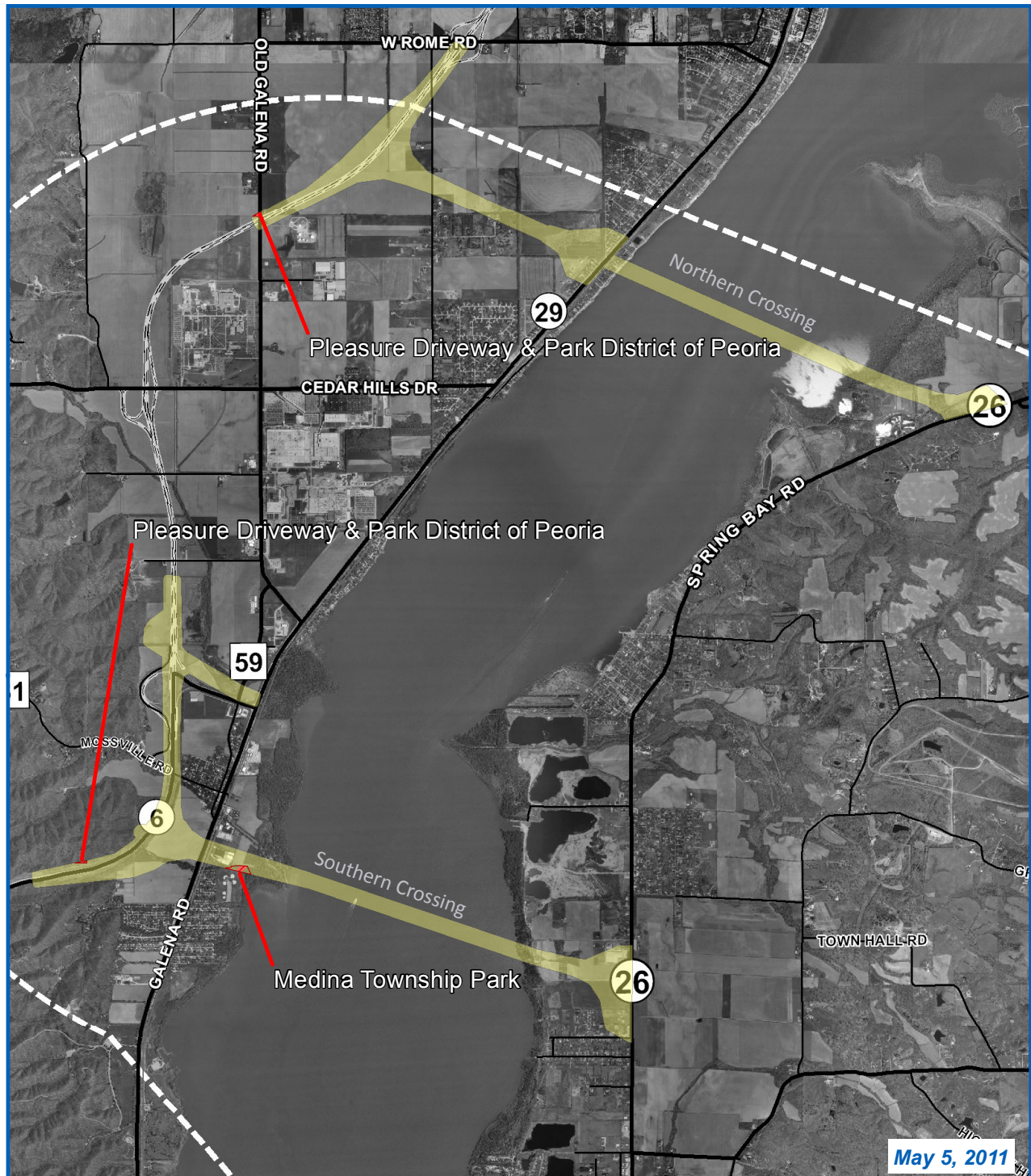


Legend

-  Wetlands
-  Representative Bands

0 0.5 1 2 3 Miles





RIVER CROSSING COMPARISONS MAP - CONSERVATION/PARK LAND
EASTERN BYPASS STUDY

PEORIA, TAZEWELL &
 WOODFORD COUNTIES
 P-94-021-07



Legend

-  Conservation/Park Lands
-  Representative Bands

