



Illinois Department of Transportation

Eastern Bypass Study

Corridor Development To Date

Illinois Department of Transportation
District Four

February 22, 2011

At a Community Advisory Group (CAG) meeting held in May of 2009, the Study's CAG members identified a total of 20 potential corridor locations for the proposed Eastern Bypass. These 20 corridors were presented to the public at a Public Open House meeting in August 2009.



Following the public meeting, some small areas were added to the "footprint" of the combined 20 corridors and other small areas were deleted from the footprint. This was done to either: allow combinations of corridors to be made (additions), or to eliminate from consideration certain particularly problematic areas (deletions). These additions and deletions were agreed to by the CAG members at a CAG meeting held in the fall of 2009.



Following that CAG meeting, the IDOT study team began its detailed review of these corridor areas. Early in that review, another addition was added: an area connecting the I-74/474 interchange with corridors running east of Washington. This link is shown in blue on the map at the right.



Next, the IDOT study team drafted 500 foot wide “representative bands” in each corridor (shown in blue on the map to the right). These bands were meant to represent a hypothetical roadway location and were drawn to provide a way to compare the corridors’ potential benefits and impacts.

After refining the representative bands to meet acceptable curvatures and other basic engineering considerations, the IDOT study team analyzed the potential corridors, removing from consideration various illogical routings. This resulted in a total of fourteen corridors deemed appropriate for further analysis (reflecting the input of the CAG members’ original 20 corridors).

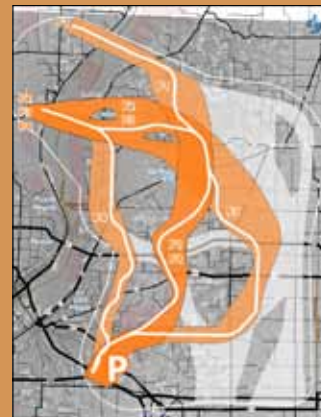
These fourteen corridors were then grouped into four sets, or “families,” based on where they intersect with Interstate 74:

- **Pleasant Hill Road (“P”)** corridors begin at the Interstate 74/474 interchange.
- **Tennessee Avenue (“T”)** corridors begin at Interstate 74 near Tennessee Avenue east of Morton and run west of Washington.
- **Main Street (“M”)** corridors begin at Interstate 74 near Main Street/Washington Road and run east of Washington.
- **Dee-Mack Road (“D”)** corridors begin at Interstate 74 near Dee-Mack Road.

Larger maps of the corridors can be found on the pages that follow.

In order to compare the potential benefits and impacts of each corridor, one representative band was developed for each of these fourteen corridors. The study team used Geographic Information Systems (GIS) software to calculate impacts to wetlands, agricultural lands, developed properties and other resources, based on these bands. The bands were also used as a basis for forecasting future traffic volumes on the Eastern Bypass and other roads in the local network for the study’s “design year, which has been established as 2045.

The representative bands are used as a tool to compare potential benefits and impacts between corridors. While each band is meant to represent a highway alignment, it is important to note that these are not actual roadway alignments. Actual highway alignments will not be developed until after the corridor phase of the study has been completed.



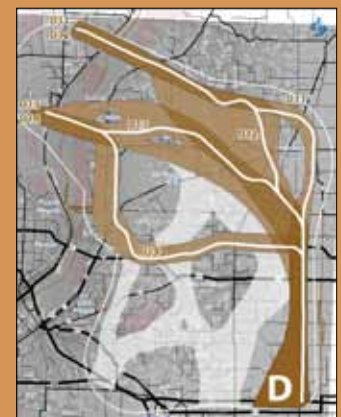
Pleasant Hill Road Family



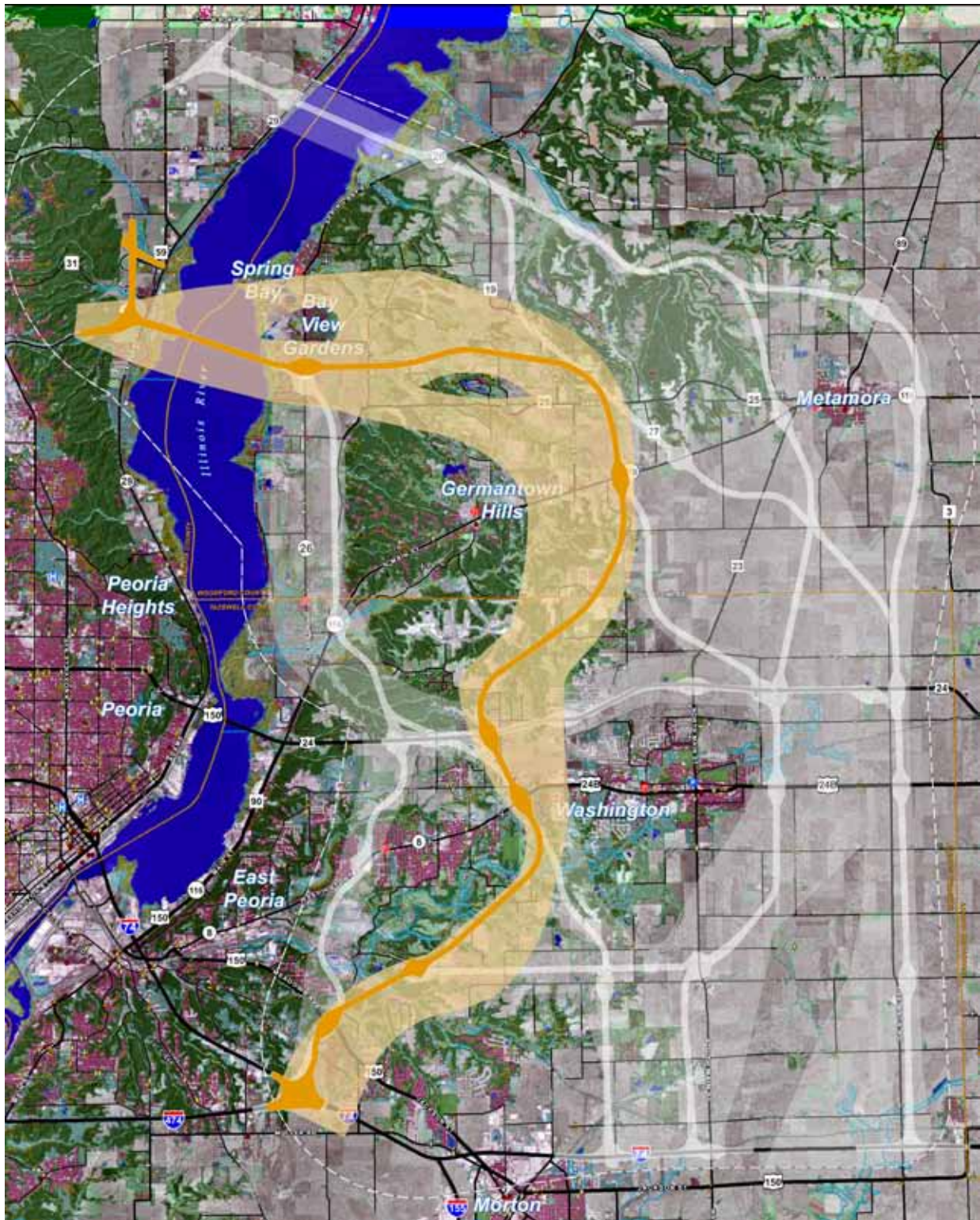
Tennessee Avenue Family



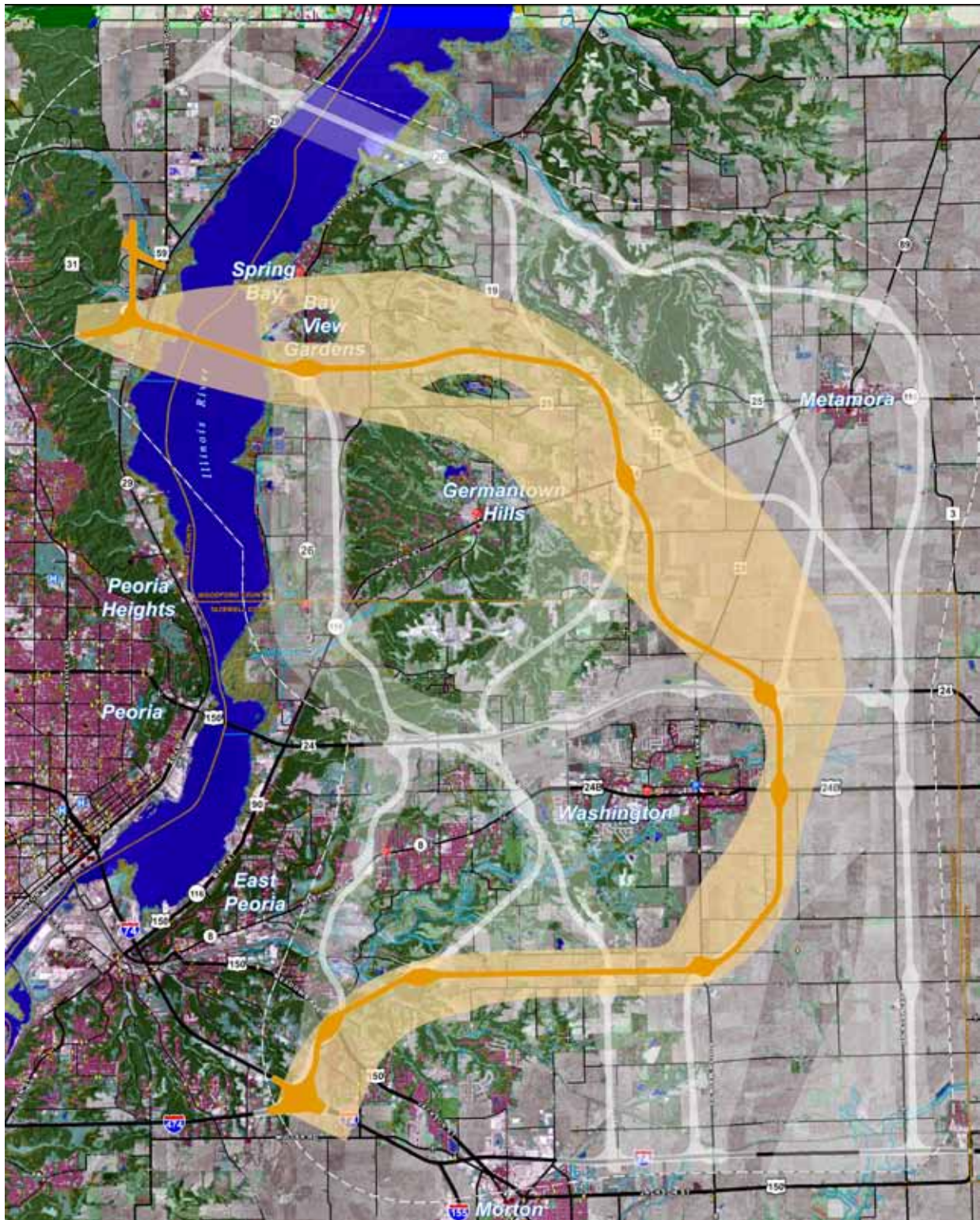
Main Street Family



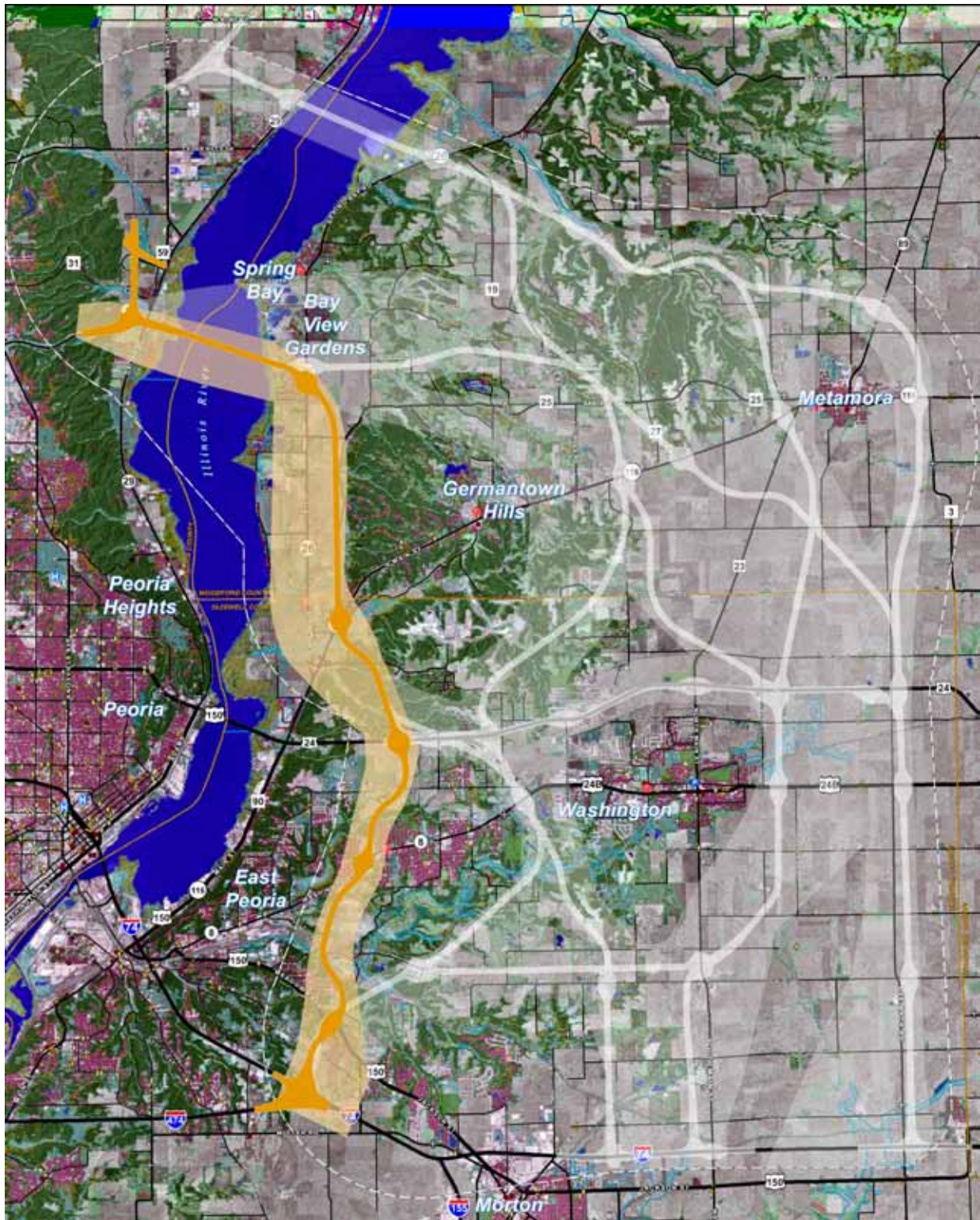
Dee-Mack Road Family



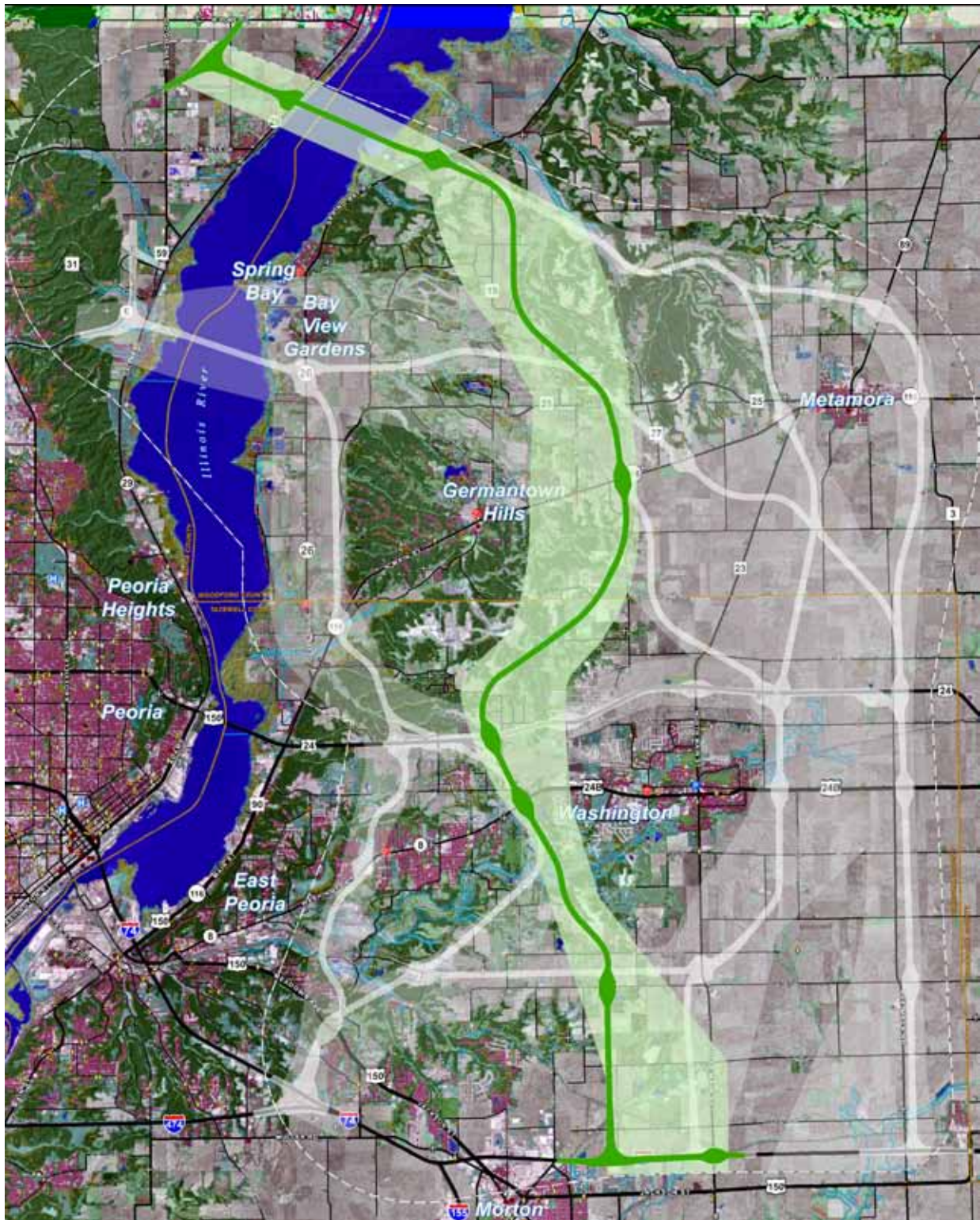
**Pleasant Hill Road – 2
Corridor and Representative Band**



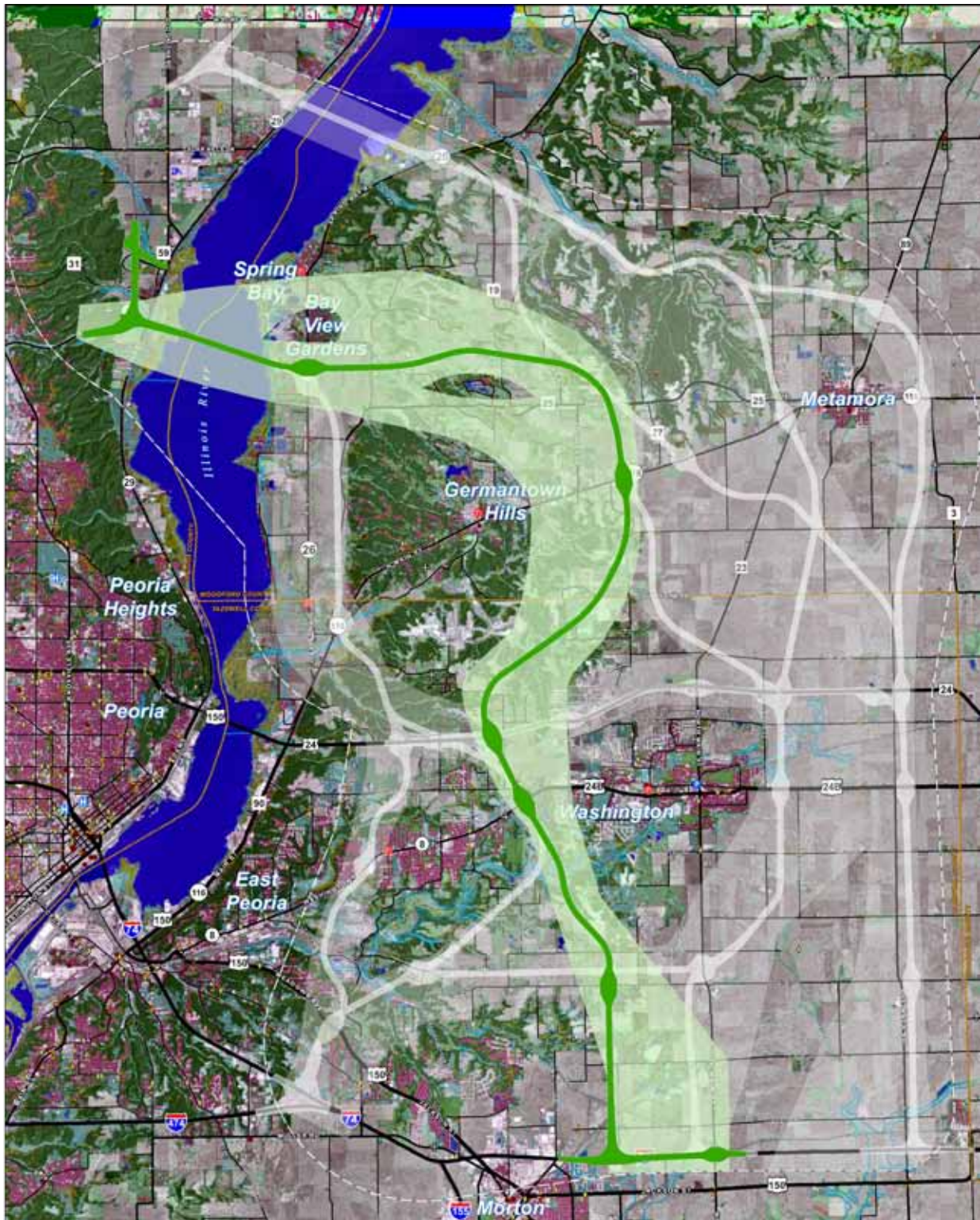
**Pleasant Hill Road – 3
Corridor and Representative Band**



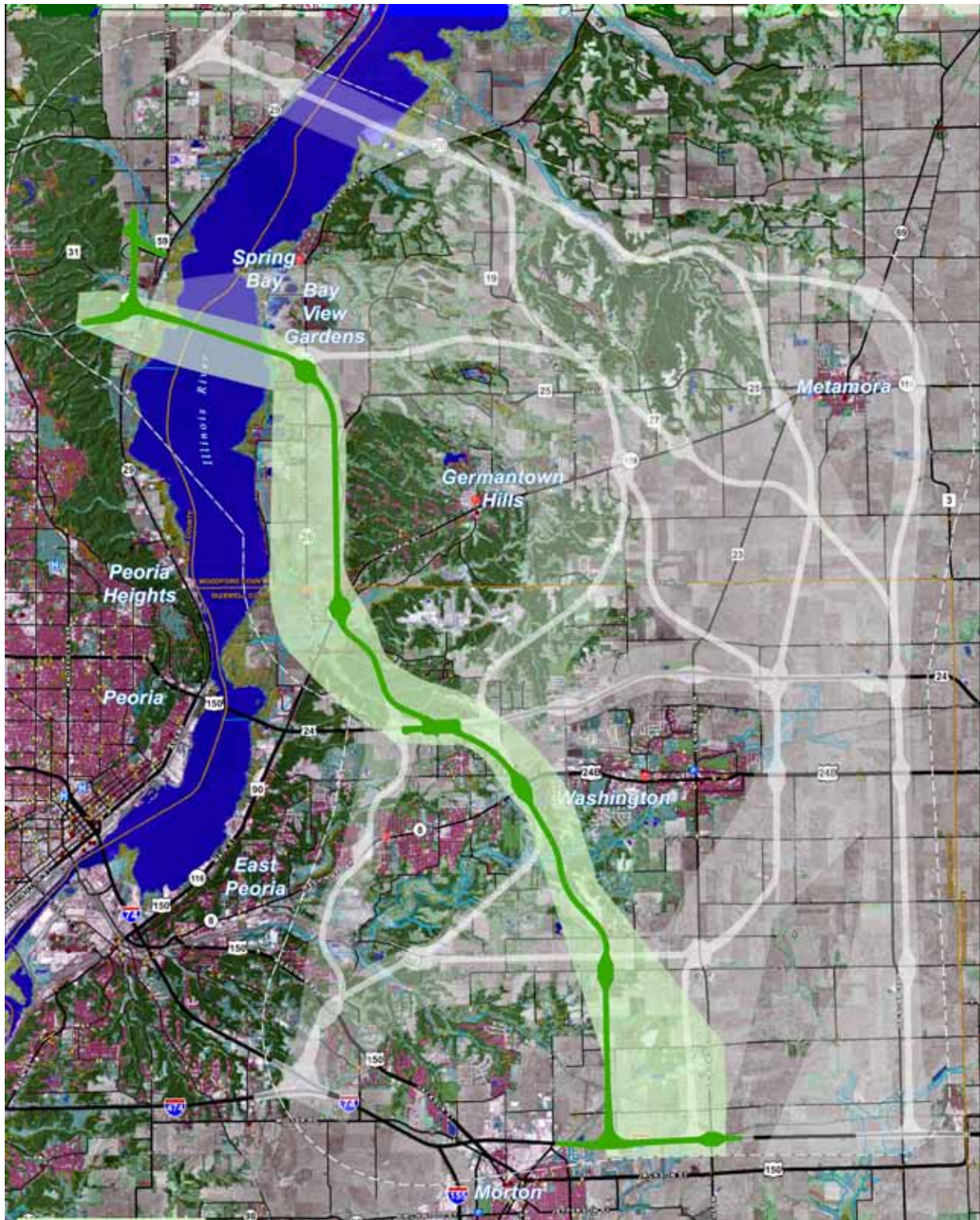
**Pleasant Hill Road – 4
Corridor and Representative Band**



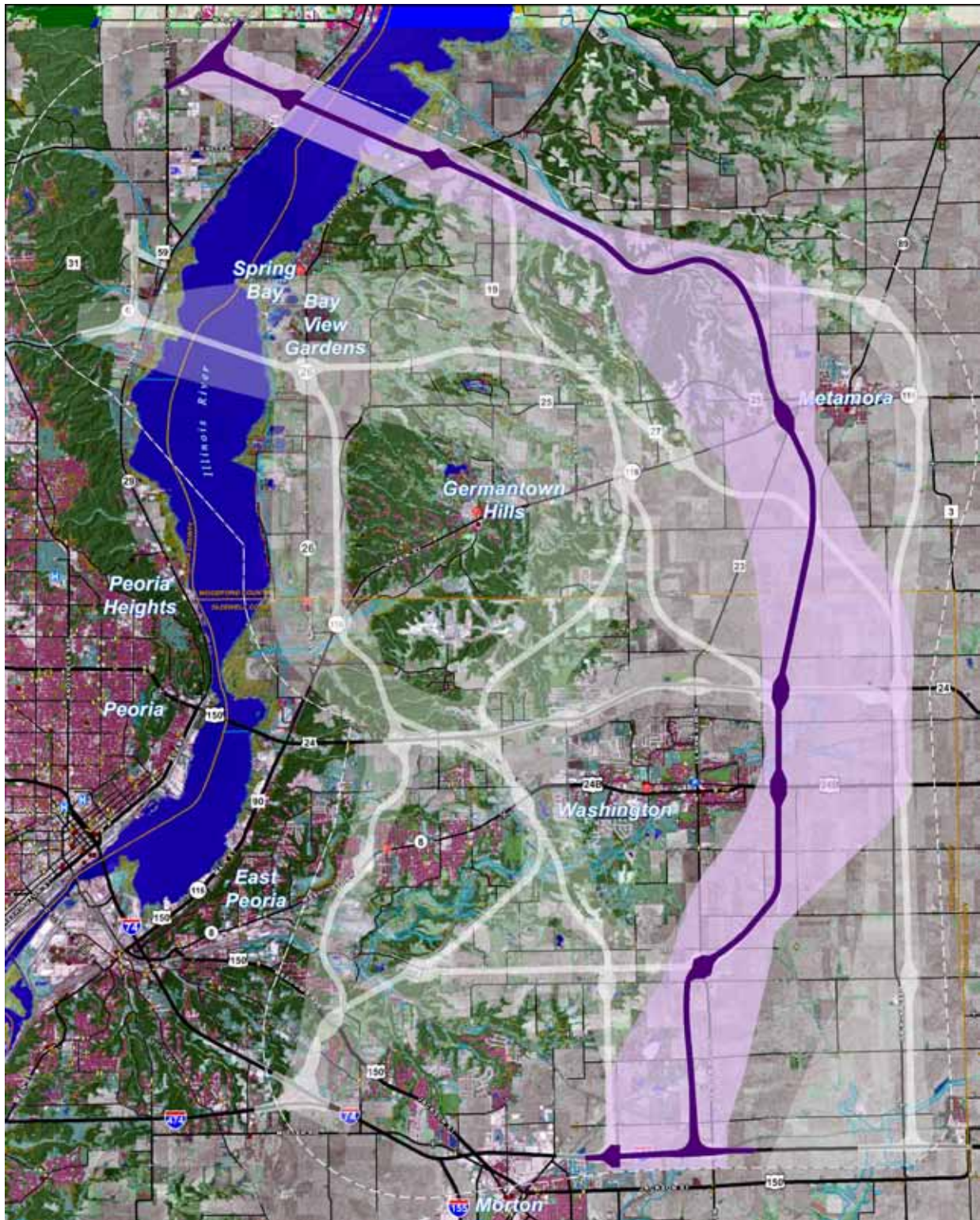
**Tennessee Avenue – 5
Corridor and Representative Band**



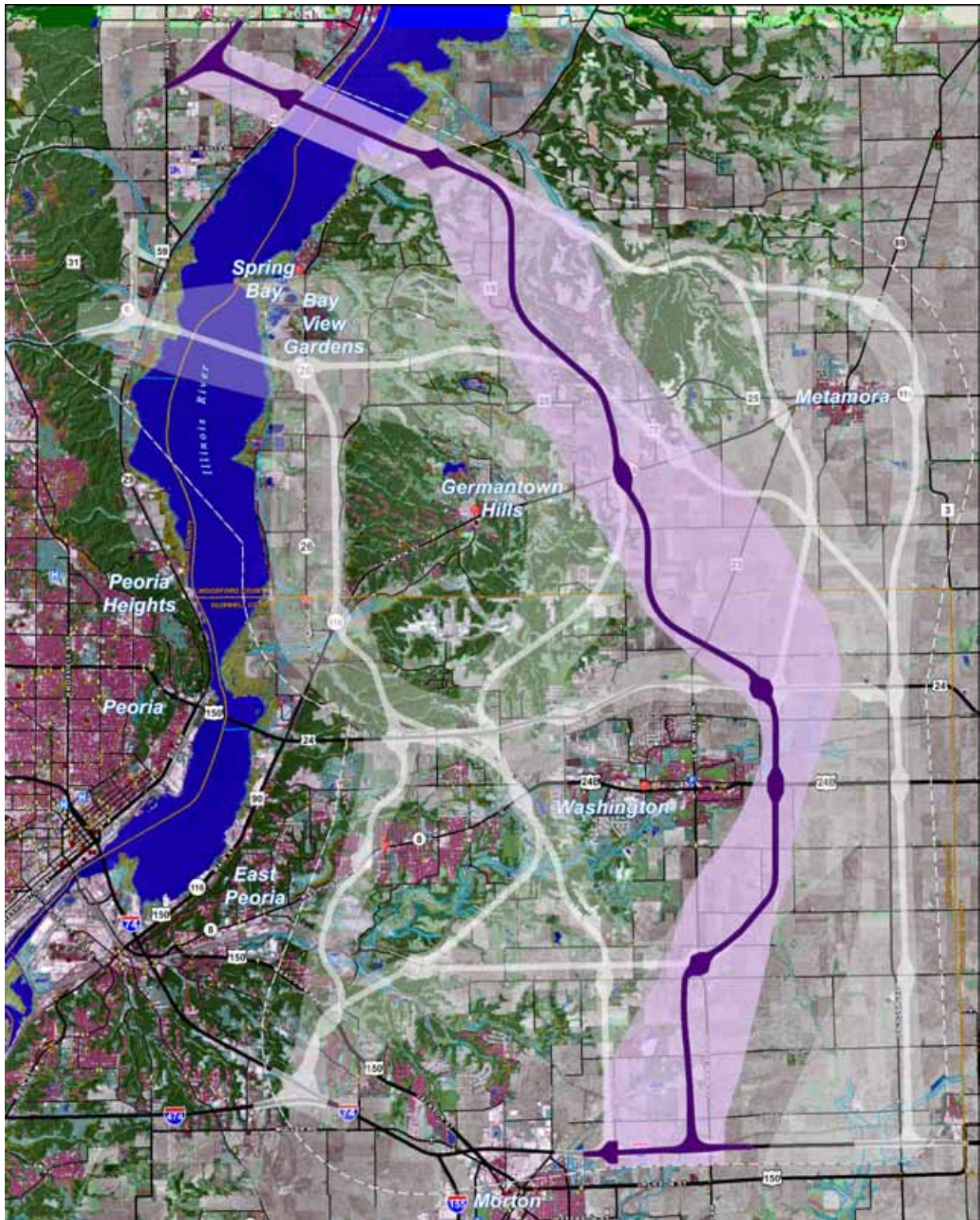
**Tennessee Avenue – 6
Corridor and Representative Band**



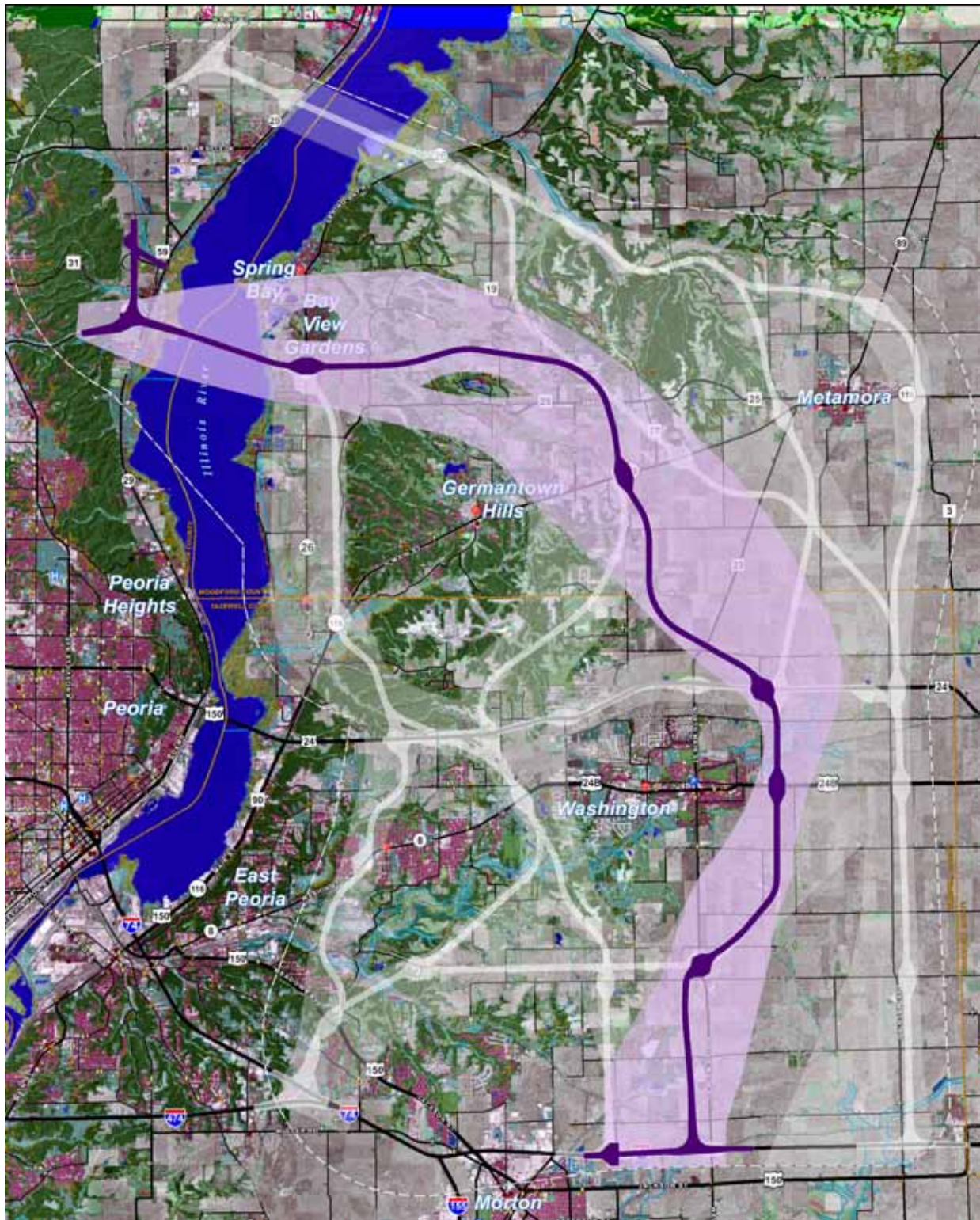
**Tennessee Avenue – 7
Corridor and Representative Band**



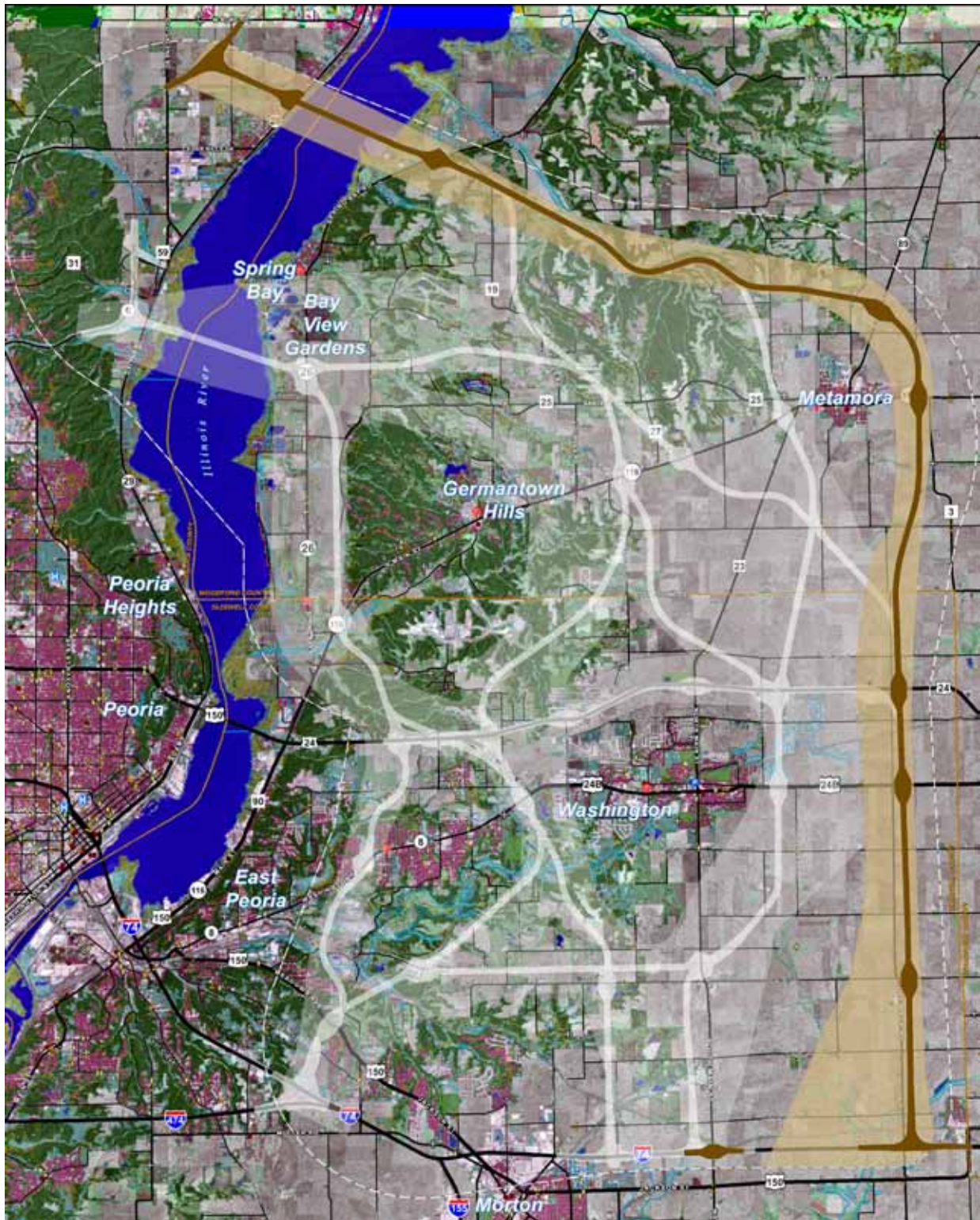
**Main Street – 8
Corridor and Representative Band**



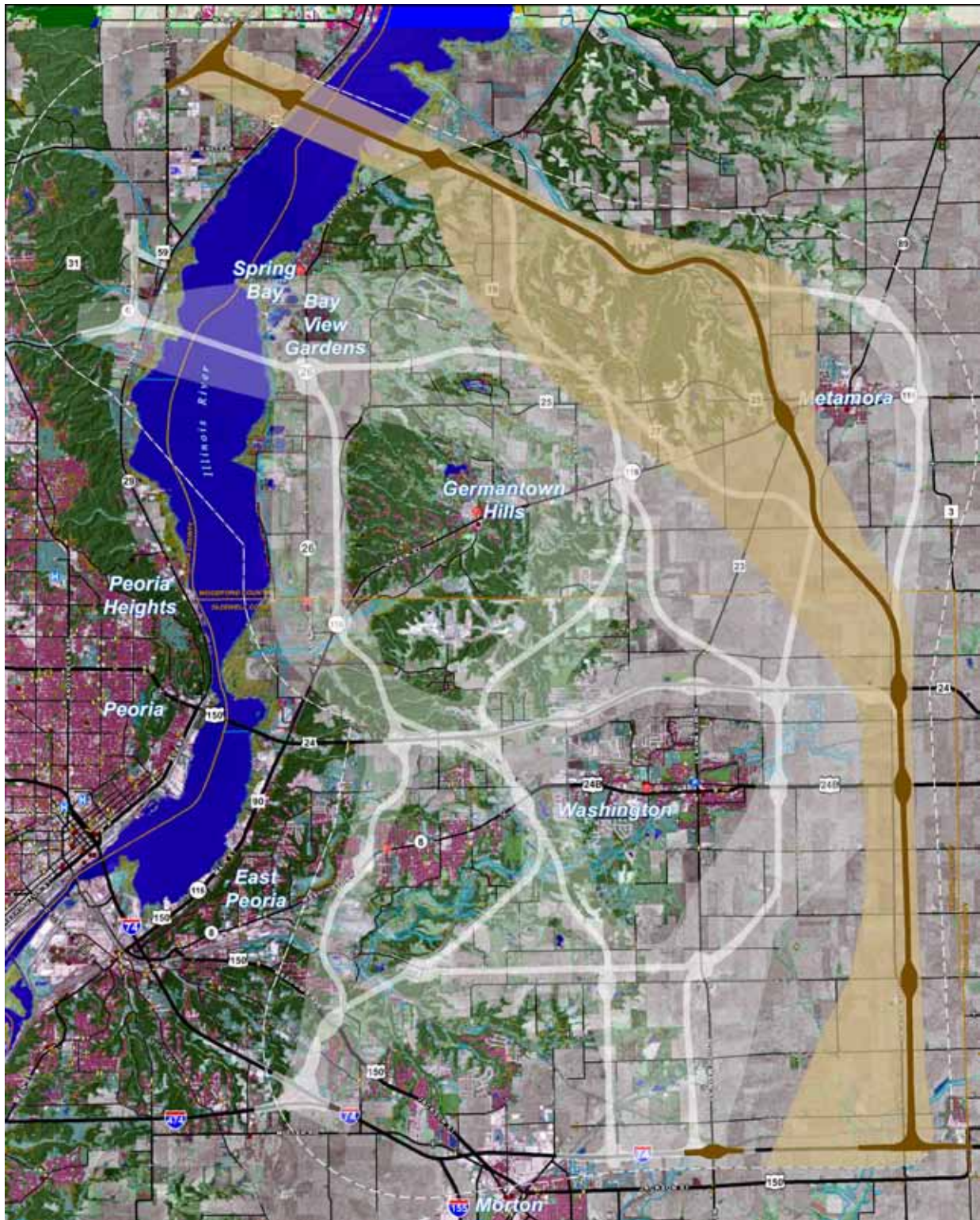
**Main Street – 9
Corridor and Representative Band**



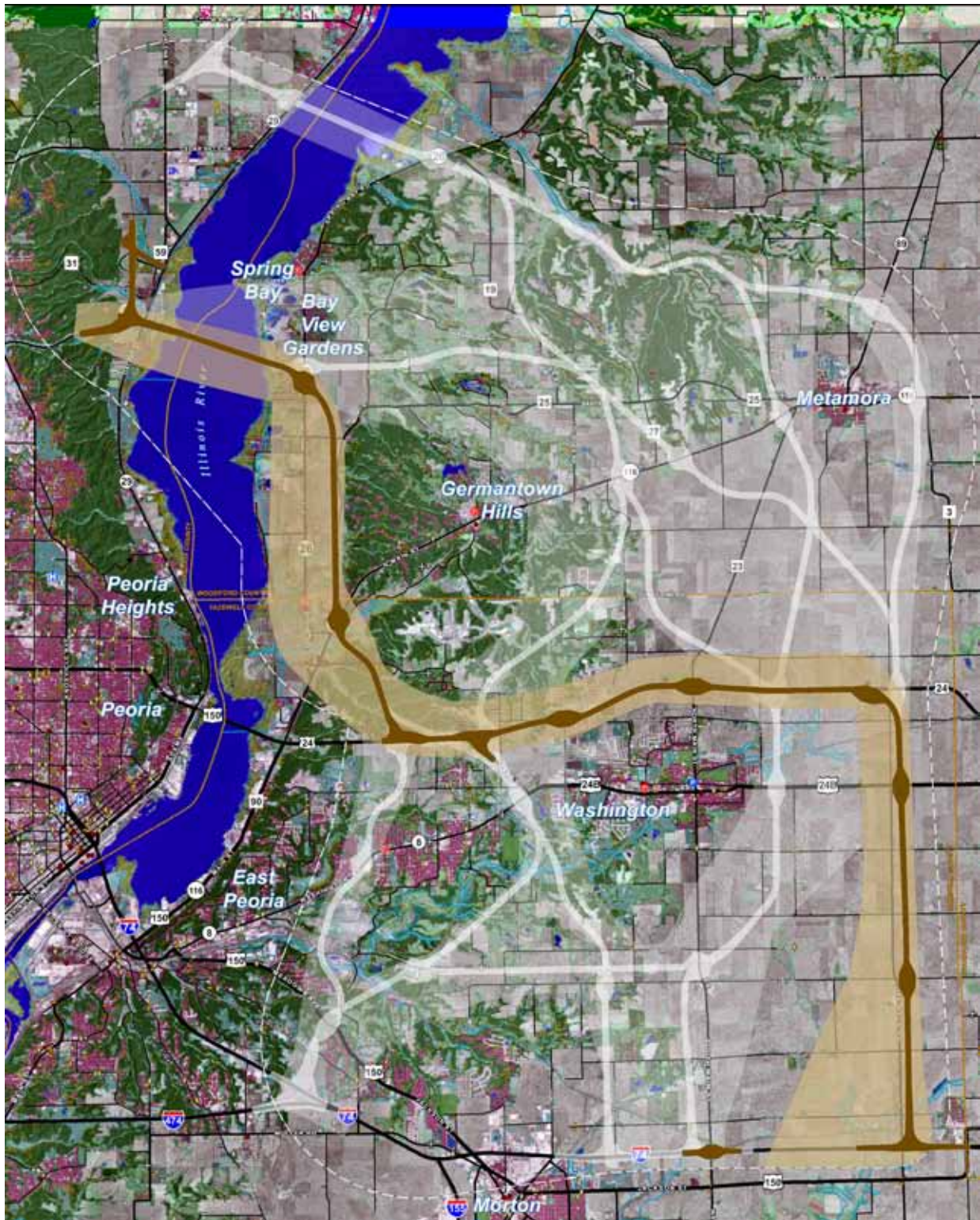
**Main Street – 10
Corridor and Representative Band**



**Dee-Mack Road – 11
Corridor and Representative Band**



**Dee-Mack Road – 12
Corridor and Representative Band**



**Dee-Mack Road – 14
Corridor and Representative Band**